

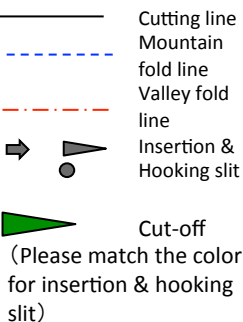
How to assemble ITER paper model

Things to prepare (No glue or tape needed)

- Thick printing paper (Thickness 0.2mm and over recommended*)
- Box cutter • scissors (Please handle with care)
- A cutting mat (or card board)
- Something sharp-pointed e.g. used ball point pen etc. (This is for making deep creases in folding lines to make it easier to fold)
- A ruler

ITER paper model can be downloaded from ITER Japan
Website: <http://www.fusion.qst.go.jp/ITER/>

Line and mark

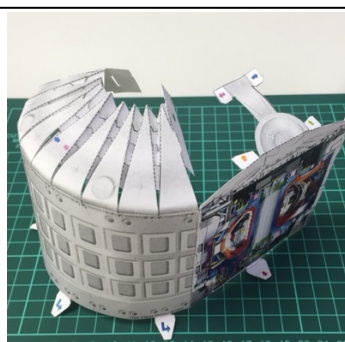


- ① Print out on thick printing paper
- ② Cut out along the cutting lines by box cutter or scissors.
- ③ Put ruler along the fold line (mountain or valley) then trace along the line using a used ball point pen, etc.
- ④ Assemble the 3 parts as shown below.
- ⑤ That's all for completion. If you want to know the name of facilities, please attach the facilities explanation card to the front part.

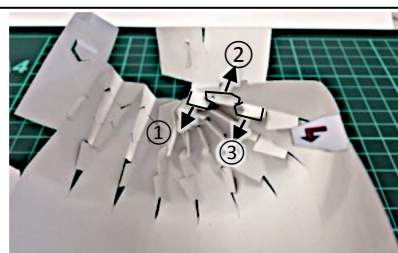
(Underlined explanations are important: key to success!)

- Target : 12 years and up (difficulty: ★★★ (high))
- Time required : 1 ~ 2 hours for adults

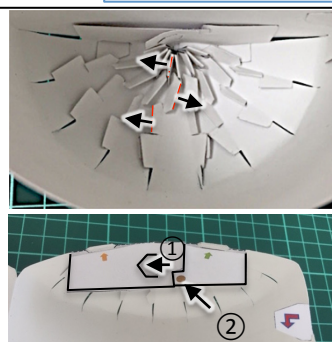
1. Assembling ITER main body



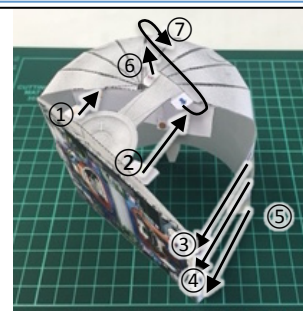
Fold along the fold line after making trace line firmly using used ball point pen, etc.



From inside, 3 folding parts should be folded alternately as shown in the photo ①、②、③. Repeat this for rest of the part. Make a dome shape referring the front photo.

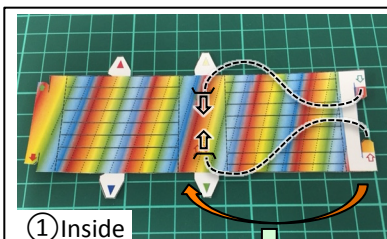


After making dome shape, insert part ① to its slot and fix it by hooking slit ②.

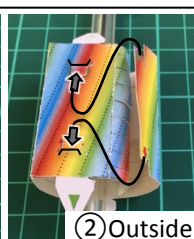


Put the part into the corresponding slot in order from ① to ⑦. For ③ ④, slide lower to fix in place after insertion. For ⑤ fix it by hooking slit.

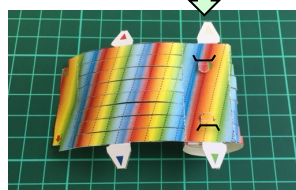
2. Assembling Plasma



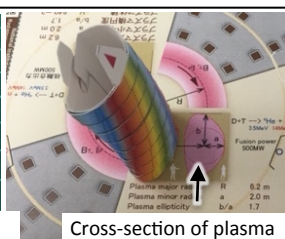
① Inside



② Outside



Put ① into the slot from inside. Put ② into the slot from outside

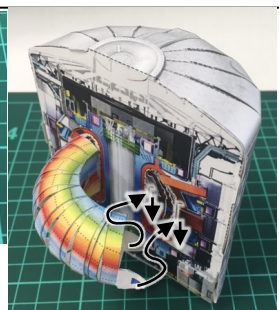


Cross-section of plasma

Make vertically long shape referring to the cross-sectional figure on the base. (It might be easier if you use ball point pen, etc.)

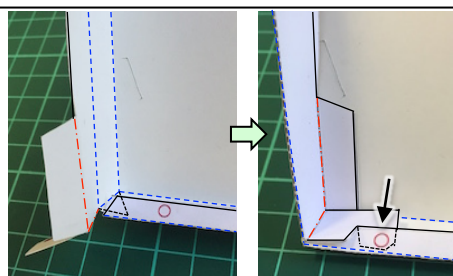


Expand evenly, forming a semi-circle. Shape the plasma so that the inside and outside comes out alternatively.



Insert this into the main body then slide lower to fix in place.

3. Assembling the base and final installation



Fold along the folding line. After that, put the hooking slit into folded part as above photo to fix in place (4 positions)



(Above) Fix the ITER main body into the base, then slightly shift it in the right direction (4 positions). You can choose the English version by fixing it onto the opposite side of the base.
(Right) You can put an LED light inside the plasma part after completion. Please try various ideas and have fun with it!!

